

COUNTERACT™ FIRM

Soil Surfactant

CounterAct™ Firm is a high end soil surfactant chemistry designed to reduce water repellency in the soil, correct the causes of hydrophobicity and prevent the development of localized dry spot (LDS).

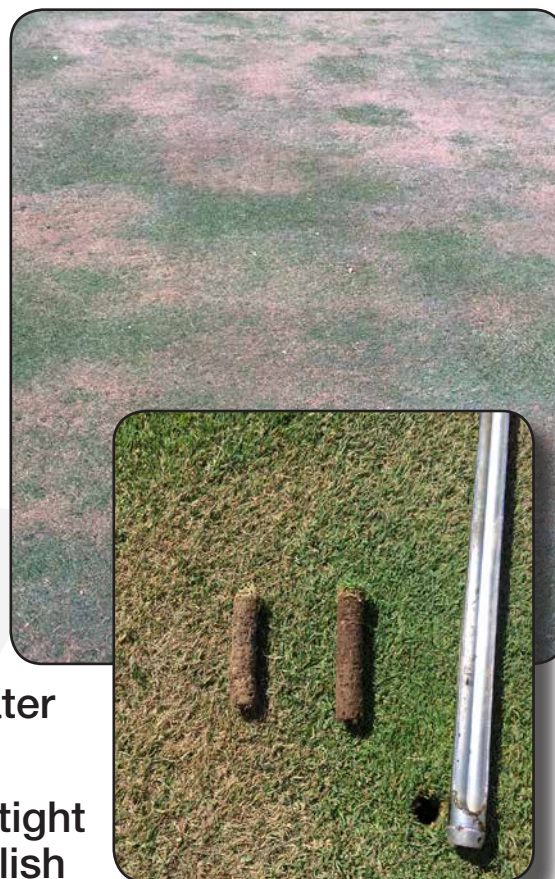
The surfactant chemistry in CounterAct™ Firm promotes active penetration in difficult to wet soils to increase hydration in the root zone and improve surface firmness.

University research has shown that CounterAct™ Firm, when applied at labeled rates, promotes improved turf quality, color and green cover on both warm and cool season turfgrasses, even when subjected to severe drought stress during the summer.

KEY FEATURES

CounterAct™ Firm

- Provides reliable wetting and re-hydration of the soil
- Chemistry contains components that both treat and prevent the causes of localized dry spot (LDS) and water repellency in the soil
- Promotes water infiltration into tight or water repellent soils to establish lasting root zone hydration and moisture uniformity



Water repellency on a hydrophobic soil leads to the development of localized dry spot (LDS) in established turfgrasses

COUNTERACT™ FIRM

SurfPack™

Directions for Use:

Apply 250 ml per 100 m² in 10 liters of water per 100 m² every 30 days.

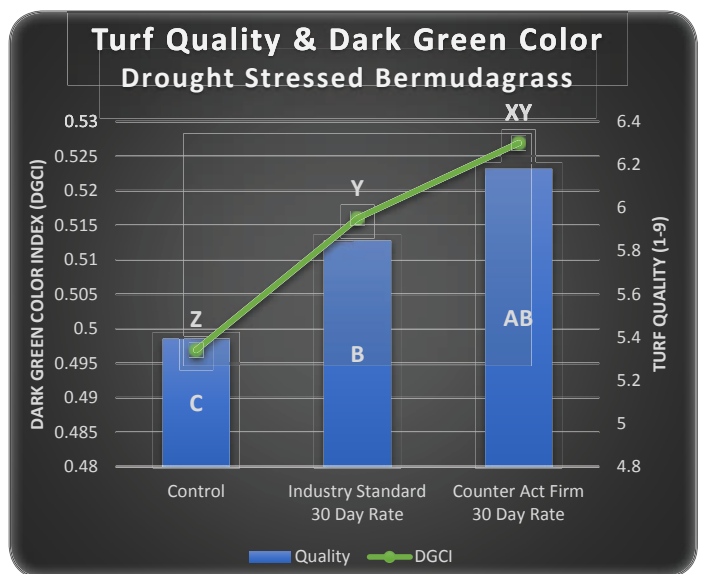
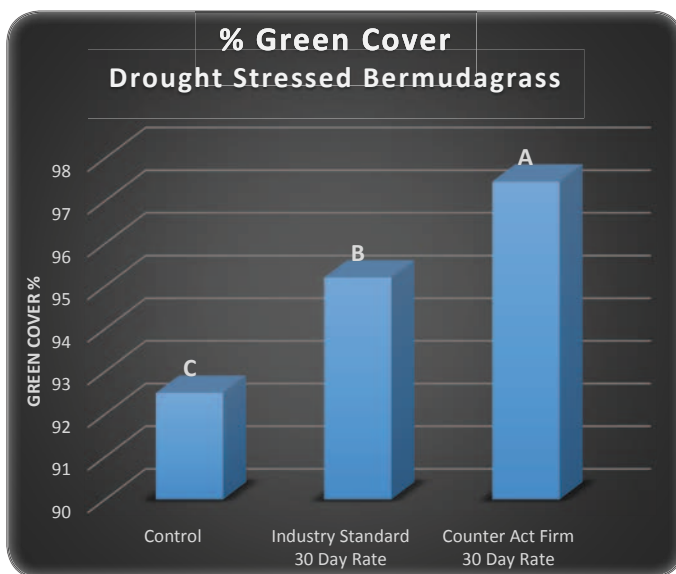
For increased penetration and surface firmness apply 250 ml per 100 m² in 10 liters of water per 100 m² every 15 days.

Irrigate thoroughly after application to remove the product from the leaf tissue and into the soil.

Performance:

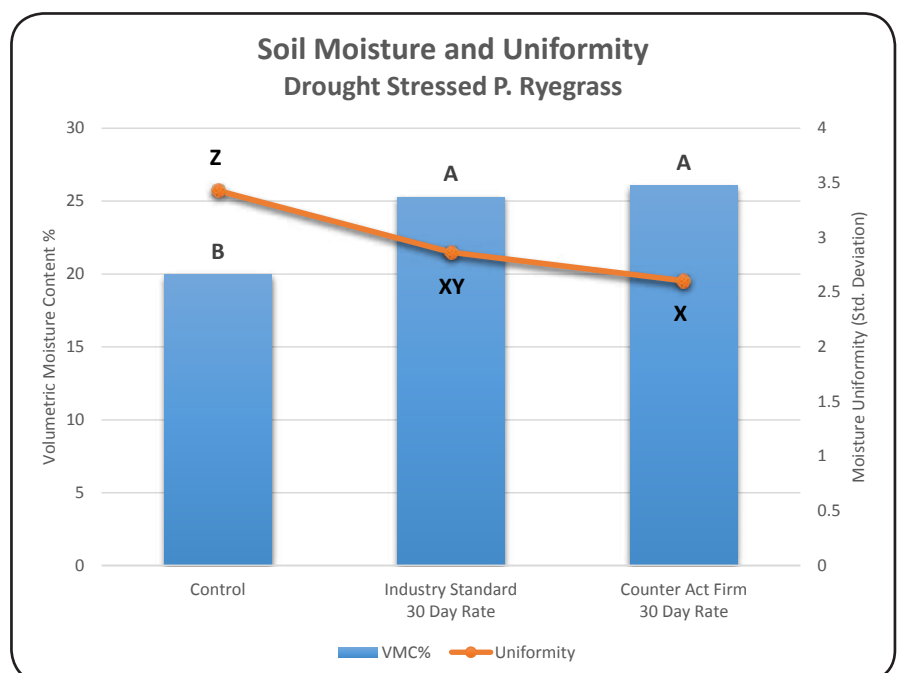
2016 Drought Stress Trials

Source: New Mexico State University. Treatments connected by the same letter are not significantly different at $p < 0.05$



University drought stress trials on bermudagrass showed that **CounterAct™ Firm** exhibited significantly higher turf quality, green cover and color when compared to the untreated control and industry-leading surfactant chemistries when applied at full 30 Day rates.

Even under severe drought stress, Perennial Ryegrass plots treated with the 30 day rate of **CounterAct™ Firm** increased soil moisture content and improved soil moisture uniformity over the untreated control and industry leading soil surfactant



Standard deviation is a measure of how tightly grouped the soil moisture values are around the average. Lower values indicate higher uniformity.